

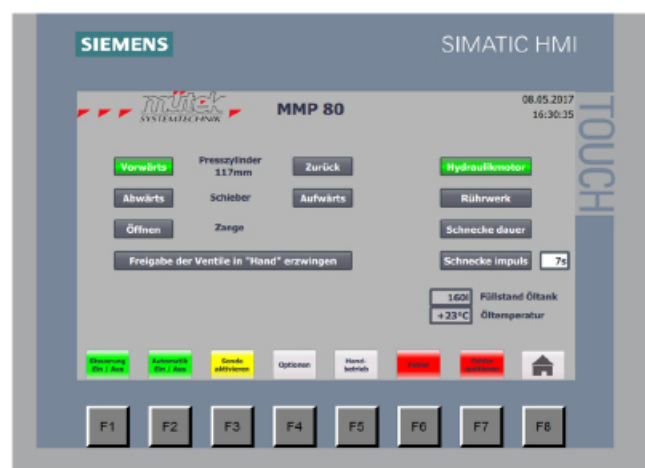


# Briquetting Press Type MMP

Throughput: 30 - 110 kg/h

**QUALITY FEATURES**

- Compactor Screw
- 160 Liter Hydraulic Unit
- Siemens Touch Display
- Briquette Length Adjustment



## Characteristics

With the hydraulic briquetting presses of the series MMP, wood chips, dust and chips, also from various other materials such as straw, miscanthus, peat, paper, cardboard, plastics, etc., can be pressed into dimensionally stable, cylindrical briquettes. The machines are CE-compliant and are characterized by a solid construction, which guarantees a consistent briquette quality in continuous operation.

The briquettes are produced exclusively with extremely high pressure without the addition of binders. The volume of the starting material can be reduced by up to 90% depending on the material. The maximum material moisture content must not exceed 18% Atro. The standard silo has a filling volume of one cubic meter. Silos with larger filling volumes or special containers built as a substructure under an existing suction and filter system or as a complete disposal unit with dedusting plants – approved for interior installations – are also available.

The briquetting presses of the series MMP are designed for the production of briquettes from heterogeneous starting material, e.g. dust, woodchip etc. The stroke length is monitored via a path measurement system installed in the main press cylinder. The built-in Siemens PLC control evaluates the data and controls the briquette length over the duration of the pre-compressing compactor screw (too long briquettes means less material, too short briquettes means more material). The optimal briquette length is 50 mm.

The PLC controller also provides many additional information, e.g. temperature of hydraulic oil, number of manufactured briquettes, operating hours counter, fault analysis, etc. The energy efficient hydraulic system with a tank volume of 160 liters allows long operating hours without an additional cooling unit.

### The following advantages are obtained with the production of briquettes:

- Creation of valuable material from residual material
- Reduction of the volume by up to 90%
- Cost savings in storage and transport
- Efficient disposal
- Profitable sales of the briquettes

### Special features:

- Siemens PLC control with touchscreen panel
- Data analysis and error analysis
- Integrated path measurement system installed in main press cylinder
- Smoothcushioned running cylinders
- Manual function of all cylinders
- Pre-compressing screw
- Permanent running of the agitator with separate control
- Oil deficiency sensor and shutdown of the machine if the minimum level is not reached

## Technical Data

MODEL	THROUGHPUT kg/h	BRIQUETTE Ø mm	MOTOR kw	DIMENSIONS L x W x H mm	WEIGHT kg
MMP 60	30 - 60	50	5,5	1730 x 1350 x 1500	1000
MMP 80	35 - 80	60	5,5	1730 x 1350 x 1500	1000
MMP 110	40 - 110	65	5,5	1730 x 1350 x 1500	1100

